

# FREIGHTLOK

## LASHING & SHORING SOLUTIONS

**FreightLok Lashing**

**FreightLok Shoring**

**LOADLOK**  
CLEVER IN CARGO CONTROL

MEMBER OF  CARGO  
CONTROL  
COMPANY

# LEADING CARGO CONTROL SOLUTIONS

Here in Hirwaun (Wales, UK), at the heart of our business, is where our world's leading cargo control solutions are designed, developed and manufactured. **True craftsmanship** combined with **state-of-the-art technologies**. Creating tailored solutions for customers for the ultimate efficient solution that fulfills their requirements.



# TAILOR MADE SOLUTIONS

With market and application demands varying greatly, LoadLok's product offering goes far beyond its standard solutions. If you have **specific requirements** which are not in the standard product line, we are able to **customise or develop** custom-designed solutions (for both mechanical and textile load securing equipment), tailored to the specific needs.



# CARGO CONTROL ESSENTIALS

LoadLok has all the load securing essentials for transport companies, the **building blocks** for cargo control. Whatever cargo you need to secure, we offer a solution that can do the job!

## FREIGHTLOK LASHING

As part of our FreightLok range ratchet straps are used to secure cargo in transport. Together with other lashing accessories they **prevent cargo from sliding, roll around, tip over or even fall off** the trailer. We offer a diverse range of lashing straps varying between 5.000daN for heavy duty cargo down to 175daN cam buckle straps for light duty cargo in different widths such as 25mm, 35mm and 50mm.

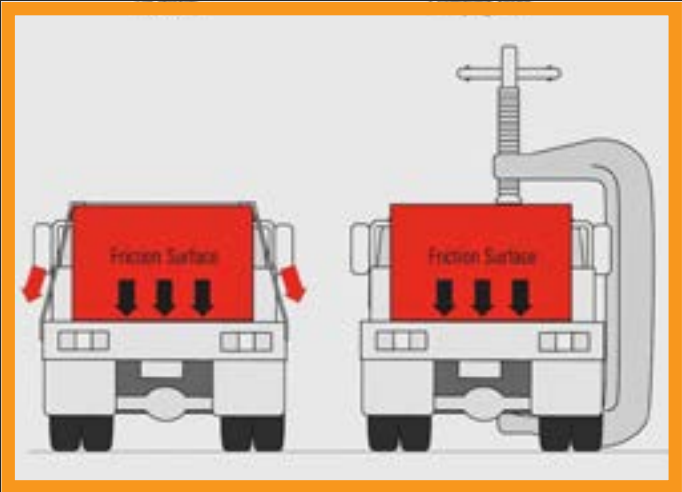
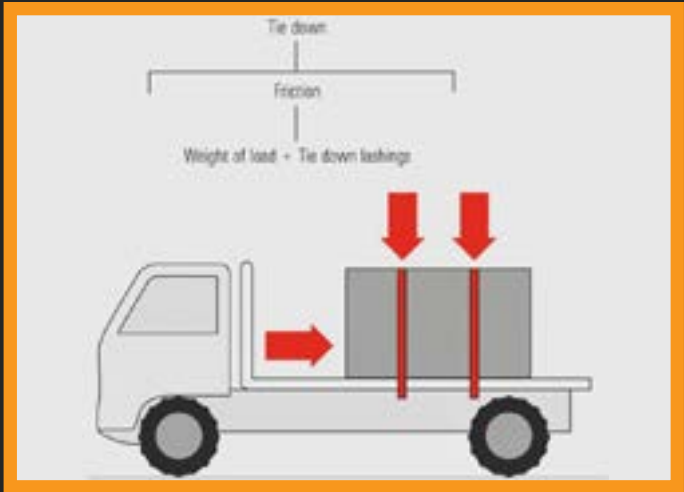
## FREIGHTLOK SHORING





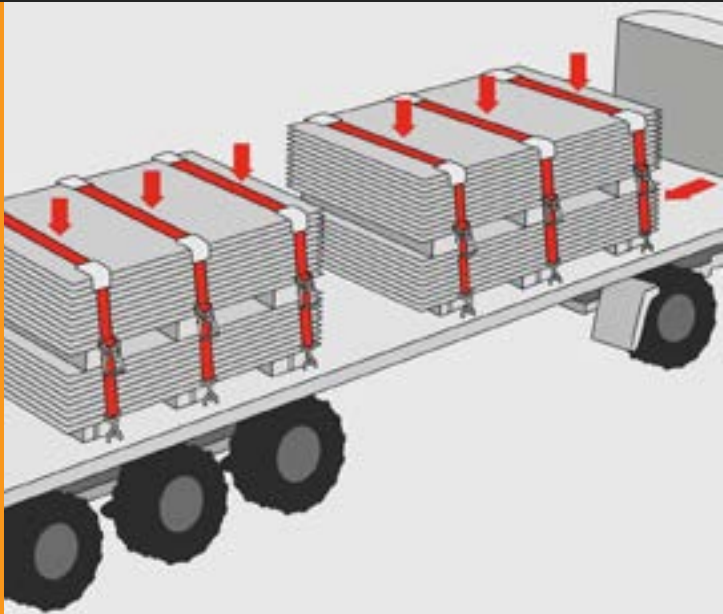
# TIE DOWN OR DIRECT LASHING...?

Common methods for load securing with lashing straps are friction (tie down) lashing and direct lashing. What method do you need in which situation? And what kind of values do you need in your lashing calculation.



## STF OR LC?

Different properties of the equipment are used for the calculations. Where the STF value is used to create extra downwards force resulting in extra friction when tying down loads, the LC value is used for Direct Lashing. When tying down loads on flatbed- or curtainsider trailers, the LC value of a lashing is of lesser importance and the STF value shall be used. The higher the STF value per lashing, the higher the friction force, resulting in fewer straps necessary to secure the load.



# LASHING LABEL EXPLANATION

The layout of this label is in accordance with the European norm (EN 12195-2) and can be used as a document to show the authorities or your customers. *It is important to know that without this label attached to a strap (or if it is unreadable), you are not allowed to use the strap in any way(!).*

PRODUCTION DATE

WEBBING MATERIAL

ELONGATION %

C

D

F

Hersteldatum: NOV-2023

Polyester PES

Dehnung max. 5%

LC 2500 daN

PA-Nr.: LL-1628542

EN 12195-2

MANUFACTURERS INFO

LASHING CAPACITY IN daN

TRACEABILITY CODE

EUROPEAN NORM

LOADLOK

CLEVER IN CARGO CONTROL

MEMBER OF

CARGO CONTROL COMPANY

MANUFACTURERS NAME & ADDRESS

1

The Cargo Control Company B.V.

Oudevel 4, 4004 LS TIEL

www.loadlok.com

Made in EU

PRODUCTION DATE

WEBBING MATERIAL

ELONGATION %

2

3

5

Hersteldatum: NOV-2023

Polyester PES

Dehnung max. 5%

LC 2500 daN

PA-Nr.: LL-1628542

EN 12195-2

LASHING CAPACITY IN daN (dekenewton)

7

LC 2500 daN

NOT FOR LIFTING!

8

Darf nicht zum Heben verwendet werden!

TOTAL LENGTH

LENGTH LOOSE END

LENGTH FIXED END

9

10

11

LG: 9,00m

LoL: 8,60m

Lor: 0,40m

TRACEABILITY CODE

EUROPEAN NORM

4

6

GS LOGO

12



# FREIGHTLOK

## LASHING SYSTEMS



**DISCOVER FREIGHTLOK  
IN ANIMATION!**

### ▶ EUROPEAN MANUFACTURER

We are proud to be a European manufacturer, with production facilities in Poland and Wales (UK), delivering competitive products of the **highest quality, with maximum flexibility**, just-in-time across Europe.

The combination of in-house product development and manufacturing offers the highest level of flexibility in our industry and makes us the perfect partner in cargo control.

### ▶ CUSTOMISATIONS

Our line-up stretches far beyond the standard range. We believe that by producing customised variations of products, specifically optimised in length, ratchet, hook and print, we can help our customers greatly **improve the handling** of our products in use.

▶ **15.000.000 COMBINATIONS**

▶ **EN 12195-2 COMPLY**

▶ **TESTED & CERTIFIED**



# LASHING SYSTEMS



**FREIGHTLOK  
25MM**



**FREIGHTLOK  
35MM**



**FREIGHTLOK  
50MM**



**FREIGHTLOK  
ACCESSORIES**



## › **+15.000.000 COMBINATIONS**

We offer more than 15.000.000 (!) different combinations of lashing straps.

We have a wide selection of **ratchets, buckles, hooks, protector sleeves, rings, lengths, colours** etc. Customize your type of strap for the application required.

You name it, we produce it.

## › **PRINTING & COLOURS**

We're committed to deliver ratchet straps that are tailored to your needs. With our unique printing abilities, we can print **your logo or text** on webbing from any size or colour. Even customized labels are among the possibilities.

- **Reduce the risk of theft**
- **Unique publicity of your brand**
- **Professional look**



# 25 MM LASHING SYSTEMS

## 803 CAM BUCKLE STRAP



ARTICLE NO.	TENSIONER	FITTING	LENGTH (M)	COLOUR	LASHING CAPCITY (daN)	BREAK-STRENGTH (daN)	STF (daN)
10012795	803	Endless	3	Orange	350	700	N/A
10012796	803	Endless	5	Orange	350	700	N/A
10012797	803	Endless	7	Orange	350	700	N/A
Custom	803	Customizable	Customizable	Customizable	350	700	N/A

## 804 CAM BUCKLE STRAP



ARTICLE NO.	TENSIONER	FITTING	LENGTH (M)	COLOUR	LASHING CAPCITY (daN)	BREAK-STRENGTH (daN)	STF (daN)
10012798	804	Endless	0,5	Orange	250	500	N/A
10012799	804	Endless	1	Orange	250	500	N/A
10012800	804	Endless	1,5	Orange	250	500	N/A
Custom	804	Customizable	Customizable	Customizable	250	500	N/A

## 906 RATCHET



ARTICLE NO.	TENSIONER	FITTING	LENGTH (M)	COLOUR	LASHING CAPCITY (daN)	BREAK-STRENGTH (daN)	STF (daN)
10012801	906	1002	3	Orange	400	800	165
10012802	906	1002	5	Orange	400	800	165
10012803	906	1002	7	Orange	400	800	165
Custom	906	Customizable	Customizable	Customizable	N/A	N/A	N/A

## 909 RATCHET



ARTICLE NO.	TENSIONER	FITTING	LENGTH (M)	COLOUR	LASHING CAPCITY (daN)	BREAK-STRENGTH (daN)	STF (daN)
10012805	909	1002	3	Orange	750	1500	255
10012806	909	1002	5	Orange	750	1500	255
10012807	909	1002	7	Orange	750	1500	255
Custom	909	Customizable	Customizable	Customizable	N/A	N/A	N/A

# 35 MM LASHING SYSTEMS

## 917 RATCHET



ARTICLE NO.	TENSIONER	FITTING	LENGTH (M)	COLOUR	LASHING CAPCITY (daN)	BREAK-STRENGTH (daN)	STF (daN)
10012813	917	1004	6	Orange	1000	2000	270
Custom	917	Customizable	Customizable	Blue, orange, red	N/A	N/A	N/A

## 908 RATCHET



ARTICLE NO.	TENSIONER	FITTING	LENGTH (M)	COLOUR	LASHING CAPCITY (daN)	BREAK-STRENGTH (daN)	STF (daN)
10012814	908	1004	6	Orange	1500	3000	N/A
10012797	908	1004	8	Orange	1500	3000	N/A
Custom	908	Customizable	Customizable	Customizable	N/A	N/A	N/A



## RATCHET STRAPS FOR CAR AND TRUCK TRANSPORT

Discover our extensive selection of top-quality ratchet straps designed for professional car and truck distribution. Our products are engineered for effortless handling and exceptional performance.

Ask our team of load securing specialists for more information.



# 50 MM LASHING SYSTEMS

## 811E RATCHET - LC 2000 DAN | STF 320 DAN



ARTICLE NO.	TENSIONER	FITTING	LENGTH (M)	COLOUR	LASHING CAPCITY (daN)	BREAK-STRENGTH (daN)	STF (daN)
10013618	811E	1006	8	Blue	2000	4000	320
10013619	811E	1006	9	Blue	2000	4000	320
10013620	811E	1006	10	Blue	2000	4000	320
Custom	811E	Customizable	Customizable	Customizable	N/A	N/A	N/A

## 811B RATCHET - LC 2500 DAN | STF 350 DAN



ARTICLE NO.	TENSIONER	FITTING	LENGTH (M)	COLOUR	LASHING CAPCITY (daN)	BREAK-STRENGTH (daN)	STF (daN)
10013621	811B	1006	8	Red	2500	5000	350
10013622	811B	1006	9	Red	2500	5000	350
10013623	811B	1006	10	Red	2500	5000	350
Custom	811B	Customizable	Customizable	Customizable	N/A	N/A	N/A

## 919 ERGO RATCHET - LC 2500 DAN | STF 500 DAN



ARTICLE NO.	TENSIONER	FITTING	LENGTH (M)	COLOUR	LASHING CAPCITY (daN)	BREAK-STRENGTH (daN)	STF (daN)
10013624	919	1006	8	Red	2500	5000	500
10013625	919	1006	9	Red	2500	5000	500
10013626	919	1006	10	Red	2500	5000	500
Custom	919	Customizable	Customizable	Customizable	N/A	N/A	N/A

## 919S ERGO RATCHET - LC 2500 DAN | STF 600 DAN



ARTICLE NO.	TENSIONER	FITTING	LENGTH (M)	COLOUR	LASHING CAPCITY (daN)	BREAK-STRENGTH (daN)	STF (daN)
N/A	919S	1006	8	Red	2500	5000	600
N/A	919S	1006	9	Red	2500	5000	600
N/A	919S	1006	10	Red	2500	5000	600
Custom	919S	Customizable	Customizable	Customizable	N/A	N/A	N/A

## 919O ERGO RATCHET - LC 2500 DAN | STF 900 DAN



ARTICLE NO.	TENSIONER	FITTING	LENGTH (M)	COLOUR	LASHING CAPCITY (daN)	BREAK-STRENGTH (daN)	STF (daN)
N/A	919O	1006	8	Red	2500	5000	900
10015246	919O	1006	9	Red	2500	5000	900
N/A	919O	1006	10	Red	2500	5000	900
Custom	919O	Customizable	Customizable	Customizable	N/A	N/A	N/A

## 916 RATCHET - LC 1000 DAN | STF 260 DAN



ARTICLE NO.	TENSIONER	FITTING	LENGTH (M)	COLOUR	LASHING CAPCITY (daN)	BREAK-STRENGTH (daN)	STF (daN)
10010967	916	1826	3,5	Blue	1000	2000	260
10012819	916	1826	4	Orange	1000	2000	260
10012820	916	1826	6	Orange	1000	2000	260
Custom	916	Customizable	Customizable	Blue, Orange	1000	2000	260



### ECONOMIC FOR BUSINESS, ERGONOMIC FOR DRIVER

The 919 Ergo Ratchet has a STF which is significantly higher than the 811 Ratchet. The STF value is used **to create extra downwards force** resulting in extra friction when tying down loads. The higher the STF value per lashing, the higher the friction force, resulting in fewer straps necessary to secure the load. The longer handle allows the driver to apply **more force** to the lashing strap **without extra effort**.

# CORNER PROTECTORS

## › CORNER PROTECTOR 2200



ARTICLE NO.	TYPE	COLOR	SIZE (MM)	MATERIAL
10009892	2200	Black	90x90x130	Plastic
14003387	2200	White	90x90x130	Plastic

## › CORNER PROTECTOR 2203



ARTICLE NO.	TYPE	COLOR	SIZE (MM)	MATERIAL
14000723	2203	Black	180x130x2400	Plastic

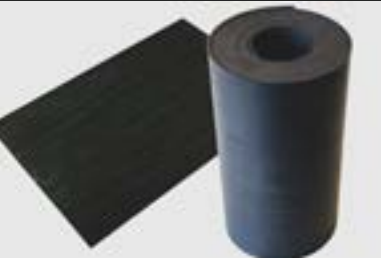
## › CORNER PROTECTOR 2204



ARTICLE NO.	TYPE	COLOR	SIZE (MM)	MATERIAL
14000724	2204	Black	160x200x140	Plastic

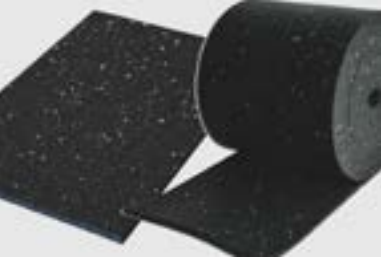
# FRICTION MATERIALS

## › VULKANISED RUBBER



ARTICLE NO.	LENGTH (MM)	WIDTH (MM)	THICKNESS (MM)	FRICTION VALUE
14000853	200	100	2,5	0,6
14000855	200	300	2,5	0,6
14000861	5000	250	2,5	0,6

## › GRANULATE



ARTICLE NO.	LENGTH (MM)	WIDTH (MM)	THICKNESS (MM)	FRICTION VALUE
14000857	200	300	8	0,6
14002788	5000	250	8	0,6



## › INCREASE FRICTION & LIFESPAN

Although underestimated, lashing accessories are **essential** in your load securing plan. Securing a load in the right way is essential for **safe transport**.

Friction materials help to increase the friction significantly. Supported with corner protectors and lashing materials it ensures that the cargo can't move. And it **increases the lifespan** of your lashing straps!



# FREIGHTLOK

## SHORING SYSTEMS

### ► 30 YEARS OF EXPERIENCE

We have been around in the cargo control industry for more than 3 decades. Our story began in Rotterdam harbour. Over the decades we have seen our business grow, making us the market leader in **cutting edge cargo control solutions**. The preferred supplier to the European transport industry, with 9 sales offices and 2 Centres of Excellence throughout Europe.

### ► R&D FOR INNOVATIVE SOLUTIONS

Our factory in Hirwaun, Wales, focuses on the **design, development**, and **manufacture** of steel and aluminium products. This is the central hub of our design engineering activities for the company, where we have a highly experienced team of engineers.



**DISCOVER FREIGHTLOK  
IN ANIMATION!**

► **HIGH QUALITY**

► **HIGH PERFORMANCE**

► **CERTIFIED PRODUCTS**

# SHORING SYSTEMS



**FREIGHTLOK  
BEAMS**



**FREIGHTLOK  
SHORING POLES**



**FREIGHTLOK  
KARGO KEEPERS**



**FREIGHTLOK  
CARGO PLANKS**



## CREATING THE ULTIMATE SOLUTION

We believe in providing the ultimate solution for our valued customers. Every customer has unique requirements when it comes to shoring solutions. That is why we offer a **comprehensive customization service**, allowing you to tailor your shoring solution exactly to your needs. With options to customize the working range, engraving, finishing, and many more - you can create a shoring solution that is truly one-of-a-kind.

## TESTING & CERTIFICATION

Our shoring solutions undergo extensive testing procedures to verify their strength, durability, and load capacity. These tests **simulate real-world conditions** to ensure our shoring solutions can withstand the demanding challenges of transportation.

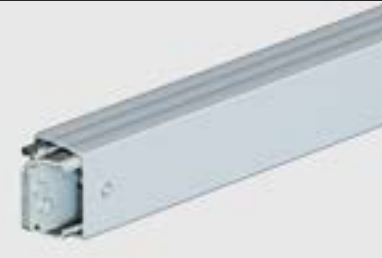
When you choose LoadLok, you are choosing shoring solutions that have been thoroughly tested and certified.





# BEAMS & SHORING POLES

## › FREIGHTLOK 1839 BEAM - COMBI HOLE TRACKS



ARTICLE NO.	PRODUCT	MATERIAL	FINISHING	WORKING RANGE (MM)	LC DECKING (daN)	LC SHORING (daN)
10014602	1839	Aluminum	Non-Annodized	2400 -2700	1000	900
10008758	1839HD	Aluminum	Annodized	2400 -2700	1350	1125
Custom	1839(HD)	Aluminum	(Non) Anodized	Customizable	N/A	N/A

## › FREIGHTLOK 1839HDSEC BEAM - COMBI HOLE TRACKS



ARTICLE NO.	PRODUCT	MATERIAL	FINISHING	WORKING RANGE (MM)	LC DECKING (daN)	LC SHORING (daN)
10011334	1839HDSEC Red (3009)	Aluminum	Annodized	2400 -2700	0	2000
10011342	1839HDSEC Blue (3008)	Aluminum	Annodized	2400 -2700	0	2000
Custom	1839HDSEC	Aluminum	(Non)Anodized	Customizable	0	2000

## › FREIGHTLOK 1839 GTS BEAM - GTS PANELS



ARTICLE NO.	PRODUCT	MATERIAL	FINISHING	WORKING RANGE (MM)	LC DECKING (daN)	LC SHORING (daN)
10014922	1839 GTS	Aluminum	Annodized	2410 -2670	1000	900
Custom	1839 GTS	Aluminum	(Non)Anodized	Customizable	1000	900

## › FREIGHTLOK 1808 – ALUMINIUM / ROUND (ADJUSTABLE)



ARTICLE NO.	MATERIAL	FINISHING	WORKING RANGE (MM)	OUTER TUBE SIZE (MM)	PLUG DIAMETER (MM)	BLOCKING CAPCITY (daN)
10008712	Aluminium	No finishing	2235-2670	45	24	275 *
Custom	Aluminium	No finishing	Customizable	45	19, 24	275 *

# SHORING POLES

## › FREIGHTLOK 1811 – STEEL / ROUND (ADJUSTABLE)



ARTICLE NO.	MATERIAL	FINISHING	WORKING RANGE (MM)	OUTER TUBE SIZE (MM)	PLUG DIAMETER (MM)	BLOCKING CAPACITY (daN)
14001410	Steel	Zinc Plated	2000-2485	42	24	350
14001411	Steel	Zinc Plated	2410-2845	42	24	350
10009828	Steel	Zinc Plated	2400-2870	42	Multiplug	200*
Custom	Steel, Aluminum	Zinc Plated	Customizable	36, 42	19, 24	350

## › FREIGHTLOK 1812 – SQUARE (ADJUSTABLE)



ARTICLE NO.	MATERIAL	FINISHING	WORKING RANGE (MM)	OUTER TUBE SIZE (MM)	PLUG DIAMETER (MM)	BLOCKING CAPACITY (daN)
10011311 - No handle	Steel	Zinc Plated	2250-2650	50	24	450*
14001566 - With handle	Aluminum	No finishing	2250-2650	50	24	275*
Custom	Steel, Aluminum	Zinc Plated	Customizable	40, 50	19, 24	450

## › FREIGHTLOK 2818 – HYS / ROUND (SHORTENABLE)



ARTICLE NO.	MATERIAL	FINISHING	WORKING RANGE (MM)	OUTER TUBE SIZE (MM)	PLUG DIAMETER (MM)	BLOCKING CAPACITY (daN)
10014541	Steel	Zinc Plated	2520-2595	34,8	19	150*
Custom	Steel, Aluminum	Zinc Plated, Red TPE, Blue TPE	3000	34,8	19, 24	150

## › FREIGHTLOK 1810 – STEEL / ROUND (SHORTENABLE)



ARTICLE NO.	MATERIAL	FINISHING	WORKING RANGE (MM)	OUTER TUBE SIZE (MM)	PLUG DIAMETER (MM)	BLOCKING CAPACITY (daN)
10008716	Steel	Zinc Plated	3000	42	24	350*

\* According to the VDI norm

# KARGO KEEPERS

## › FREIGHTLOK 1888 – WITH MEMORY



ARTICLE NO.	MATERIAL	FINISHING	WORKING RANGE (MM)	OUTER TUBE SIZE (MM)	END PIECES (MM)	LOAD CAPACITY (daN)
10013280	Aluminum	Powder Coated	1850 - 2250	52,5	Feet/Feet	150
10013355	Aluminum	Powder Coated	2200 - 2850	52,5	Feet/Feet	150
10013371	Aluminum	Powder Coated	2800 - 3440	52,5	Feet/Feet	150
Custom	Aluminum	Powder Coated	Customizable	52,5	Customizable	150

## › FREIGHTLOK 1867 (HD)



ARTICLE NO.	MATERIAL	FINISHING	WORKING RANGE (MM)	OUTER TUBE SIZE (MM)	END PIECES (MM)	LOAD CAPACITY (daN)
10008729	Aluminum	Anodized	2350 - 2720	38	Feet/Feet	50
11060560	Aluminum	Anodized	2350 - 2720	42	Feet/Feet	50
Custom	Aluminum	Anodized	Customizable	38, 42	19, 24, 19/24 Multiplug	50

## › FREIGHTLOK 1867 - MULTIHEIGHT



ARTICLE NO.	MATERIAL	FINISHING	WORKING RANGE (MM)	OUTER TUBE SIZE (MM)	END PIECES (MM)	LOAD CAPACITY (daN)
14004486	Aluminum	Anodized	2260 - 3110	42	Feet/Plug	200
14004485	Aluminum	Anodized	2260 - 3110	42	Feet/Feet	200

## › FREIGHTLOK 1871 – EXENTER



ARTICLE NO.	MATERIAL	FINISHING	WORKING RANGE (MM)	OUTER TUBE SIZE (MM)	END PIECES (MM)	LOAD CAPACITY (daN)
14001503	Steel	N/A	1880 - 2850	35	Feet/Feet	200

# CARGO PLANKS

## › FREIGHTLOK 1850 - ALUMINUM



ARTICLE NO.	MATERIAL	FINISHING	WORKING RANGE (MM)	OUTER TUBE SIZE (MM)	BLOCKING CAPACITY (DAN)	CERTI-FICATION
10008725	Aluminum	No finishing	2400 - 2700	30,5 x 124	300	DEKRA

## › FREIGHTLOK 1857 - ALUMINUM



ARTICLE NO.	MATERIAL	FINISHING	WORKING RANGE (MM)	OUTER TUBE SIZE (MM)	BLOCKING CAPACITY (DAN)	CERTI-FICATION
10010497	Aluminum	No finishing	2400 - 2700	30,5 x 124	400	TÜV

## › FREIGHTLOK 1854 - STEEL



ARTICLE NO.	MATERIAL	FINISHING	WORKING RANGE (MM)	OUTER TUBE SIZE (MM)	BLOCKING CAPACITY (DAN)	CERTI-FICATION
14003014	Steel	Zinc Plated	1920 - 2720	40	200	N/A

## › ACCESSORIES FOR SHORING

Enhance your shoring products with our range of accessories, including **handles**, various **end plugs**, **cargo hoops**, and **anti-theft system**. Contact our dedicated load securing specialists to discover our complete selection of shoring accessories.





### **LOADLOK NETHERLANDS**

Oudewei 4,  
4004 LS Tiel  
+31 (0) 344 - 670 950 / sales@loadlok.com

### **LOADLOK GERMANY**

Stadtwall 7  
48683 Ahaus  
+49 (0) 2561 95886-0 / info@loadlok.de

### **SARL LOADLOK FRANCE**

39, Rue des Granges Galand,  
37550 Saint-Avertin  
+33 (0) 2 47 73 86 50 / info@loadlok.fr

### **LOADLOK POLSKA Sp. z o.o.**

05-220 Zielonka,  
ul. Polna 23  
+48 (0) 227710001 / info@loadlok.com.pl

### **LOADLOK SPAIN S.L.**

Pol. Ind. El Oliveral Calle H esquina Calle G,  
46190 Riba-Roja de Turia, Valencia  
+34 961 665 145 / spain@loadlok.com

### **LOADLOK ROLAND UK**

Suite 12, Mercury Quays, Ashley Lane,  
Shipley, BD17 7DB,  
+44 (0) 1274 589 331 / salesuk@loadlok.com

### **LOADLOK ITALIA S.R.L.**

Via Secondo Caselle, 2 – Z.I. Fontaneto,  
10023 Chieri (Torino)  
+39 011 9473210 / info@loadlok.it

### **LOADLOK BELGIUM BVBA**

'4 Wings', Nijverheidsstraat 13,  
2260 Westerlo  
+32 38 08 20 50 / info@loadlok.be

### **LOADLOK SWEDEN AB**

Lagervägen 28,  
S-13650 Jordbro  
+46 (0) 8 500 109 60 / sales@loadlok.se

### **CARGO CONTROL COMPANY**

Oudewei 4,  
4004 LS Tiel  
+31 (0) 344 - 670 950